



St Mary's Primary School Newtownbutler



**Information for
Prospective Parents
September 2026**

St Mary's Primary is a Catholic Maintained School Where Everyone is Welcome

Principal: Mrs. P Kelly

Address: 1 Landbrock Rd
Newtownbutler
Co Fermanagh
BT92 8JJ

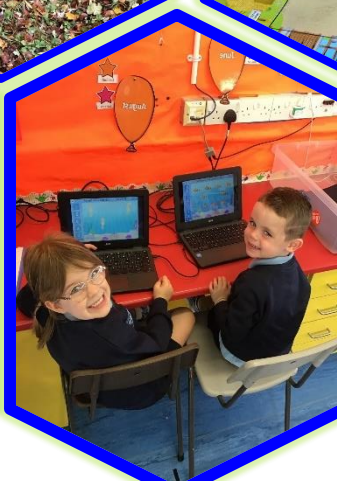
Telephone: 028 67738690

Email: info@stmarysntb.newtownbutler.ni.sch.uk

Website: www.stmarysps.com

Chairperson of the Board of Governors: Mr E Casey

C/O St Mary's PS, 1 Landbrock Rd, Newtownbutler, BT92 8JJ



Contents

St Mary's Mission Statement	Page 4
Board of Governors	Page 5
Staff	Page 6
General Information	Page 7
Awards and Accreditation	Page 8
Accommodation	Page 9
Home – School Communication	Page 12
Excellent Inspection Report	Page 13
The School Day	Page 14
The Primary Curriculum	Page 15
Religious Education Programme	Page 16
Special Educational Needs	Page 17
Pastoral Care	Page 18
Positive Behaviour Policy	Page 21
Assessment, Reporting and Standards	Page 23
Out of School Hours Learning	Page 25
Homework Policy	Page 26
Sport and Music at St Mary's	Page 27
Links with other agencies	Page 28
School Admission Criteria	Page 29
Charging and Remissions Policy	Page 31



OUR VISION

Be Kind, Be Curious, Belong!

MISSION STATEMENT

St Mary's seeks to establish an educative community, centred on Christ's values and Gospel message, where all are welcomed and respected, regardless of background or belief.

The school provides a values led curriculum, which promotes critical thinking within a moral framework and underpins high-quality learning and teaching. Staff and governors work with parents, ensuring the dignity and worth of each individual is paramount. Every child is nurtured within the Catholic Ethos, to maximise their potential: intellectually, emotionally, socially, physically and spiritually.

Good relations are established and cemented in an atmosphere of respect, caring and commitment. Educational experiences in St Mary's have a relentless focus on learning for now and the future.

VALUES

Fostering Respect, Inclusion, Empathy, Nurture, Dignity and Success

(FRIENDS)



Board of Governors

Mr. E Casey	Chairperson (Trustee)
Mr. T O'Reilly	Vice Chairperson (EA)
Mrs. C Leonard	Trustee
Mrs. M. McCaffrey	Trustee
Miss. M. Prunty	Trustee
Mr. R. McGloin	DENI
Mr. S. McGovern	Education Authority
Mr. N. Fox	Parent Representative
Mrs. G. Fitzpatrick	Teacher Representative
Mrs. P. Kelly	St Mary's Primary School – (Principal and Honorary secretary to the Board of Governors)

Staff

Our current staffing is Principal plus 8 teachers. The school secretary, building supervisor, learning support and Foundation Stage assistants, cleaners, peripatetic teachers, school meals staff and crossing patrol complete a team dedicated to the education and welfare of the children entrusted to their care.

The staff are highly trained to meet the educational, pastoral, welfare and health and safety needs of all members of the school community.



Current Teaching Staff and Management Structures 24-25.

Name (Title)	Class	Areas of Responsibility
Mrs P. Kelly	--	Principal, Deputy Designated Teacher for Child Protection,
Mrs G. Fitzpatrick	P1	Vice Principal, Learning Support Co-ordinator, Deputy Designated Teacher and Literacy Co-ordinator
Miss E. McCann	P2	
Mrs R. Grew	P3	ICT and Music Co-ordinator
Mrs J. Soraghan / Mrs D McLoughlin	P4	World Around Us and RE Co-ordinator
Miss J. Corless	P5	Designated Teacher, Numeracy and Parent Links Co-ordinator
Mr S. McGullion	P6	
Mrs R. Fitzpatrick	P7	

Classroom Assistants

Barbara McGeary, Joan McGrath, Angela Boyle, Niamh Creighan, Aine Martin, Rosaleen Martin, Ursula McMahon, Kellie Cadden, Claire McCabe, Kirsty Mullally, Rosemary Murphy, Jack Byrne, Margaret Murphy, Shauna McElgunn, Megan McCoy and Jessica McCabe.

Ancillary Staff

Secretary – Sarah Mulligan
Building Supervisor/Caretaker – Stephen Maguire
Cleaners – Imelda McCabe, Elaine Douglas
Kitchen Staff – Sheila Maguire, Sheila O'Neill, Ann Maguire, Karla Fitzpatrick.
2-3pm After Schools Leader – Aine Martin
3-4.30pm After Schools Leader Kellie Cadden

Staff



General Information

St Mary's is a co-educational Primary School in the Parish of Galloon offering:

- A welcoming, inclusive ethos, meeting the educational and pastoral needs of all.
- Well behaved, happy, confident, motivated pupils achieving high standards in all areas of the curriculum, as evidenced by rigorous internal and external monitoring and evaluation.
- A caring, talented, dedicated staff with the highest expectations for all pupils.
- Supportive, interested, co-operative parents who expect the very best for their children.
- Dedicated Governors who are fully involved in the management of the school.
- **7 straight classes** (no combining of year groups to be taught together).
- Results in English and Maths, consistently above NI Average.
- Education for children with special needs, learning difficulties, physical disabilities and / or speech and language difficulties. Winners of the **Autism NI Impact Award**.
- A 'Wrap Around Service' with After School Club available 2-4.30pm (depending on need).
- Well established transition links with local Playgroup, Surestart and Post-Primary schools.
- Links with Parish, Community, Charities, Sporting, and Industry Groups.
- Extra-Curricular, Cultural and Sporting Activities, including Art, Lego Club, Music, Swimming, Football, Netball, Cycling, Irish & Mandarin.
- An inclusive approach where everyone is welcomed, cherished, valued and respected in a caring ethos.



Awards and Accreditations

- Autism Impact Award
- Adobe Creative Educator Award.
- Being Well Doing well School.
- Young Enterprise Centre of Excellence.
- Families & Schools Together Champion School.
- ECO / Sustrans School.
- Forest School - child-centered inspirational learning which supports play, exploration and supported risk taking while developing confidence and self-esteem.
- WSNA Level 3 Nurture School.
- An official Extended School, in a position to offer additional classes and activities for both pupils and parents.
- Successful participation in Local and National Competitions.



This certificate certifies that

St Mary's PS Newtownbutler

is committed to reaching out to help us stop bullying this Anti-Bullying Week 2022



#ANTIBULLYINGWEEK
16th - 18th NOVEMBER 2022

ANTI-BULLYING ALLIANCE



CENTRE OF
EXCELLENCE
2016-17

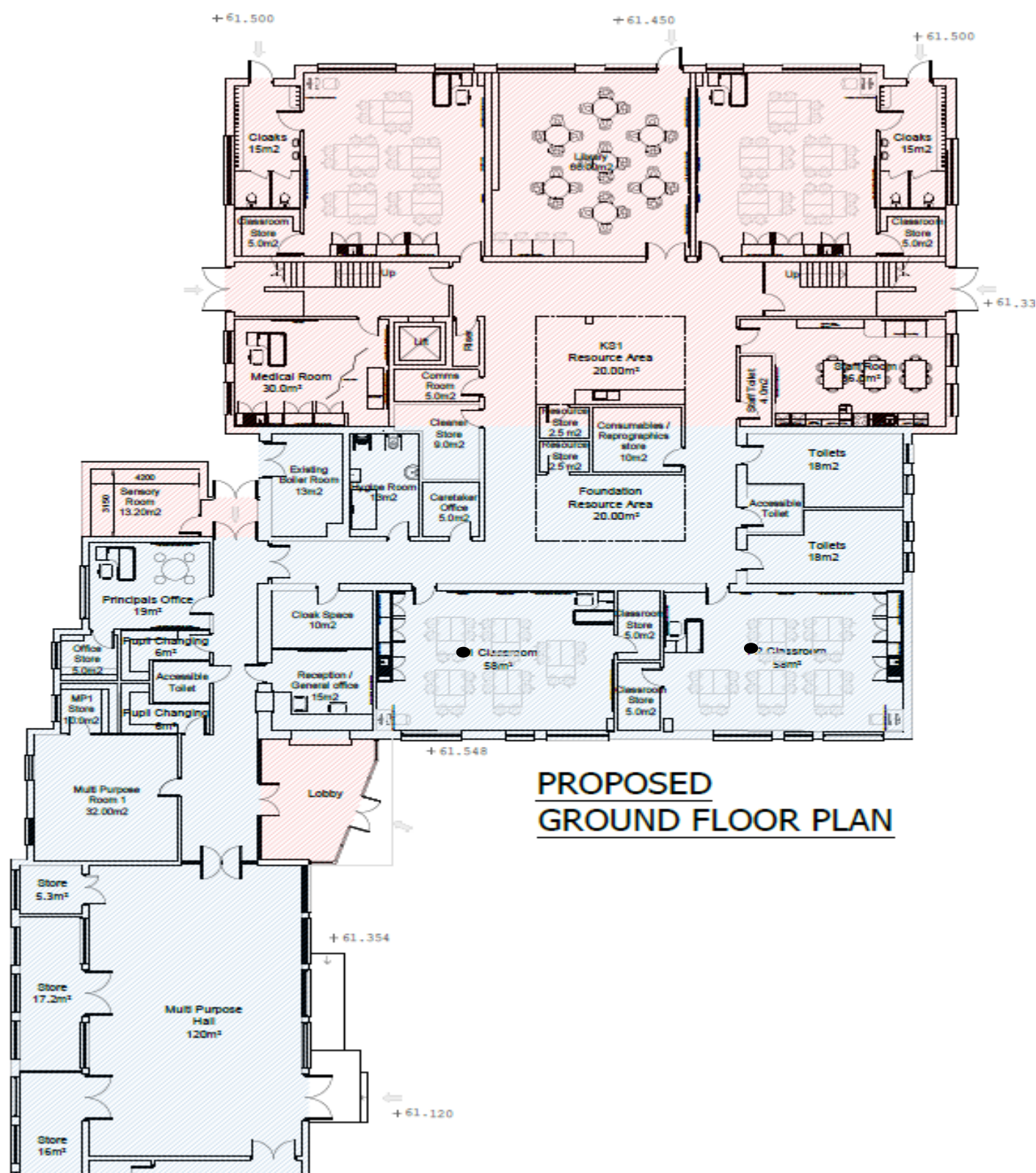


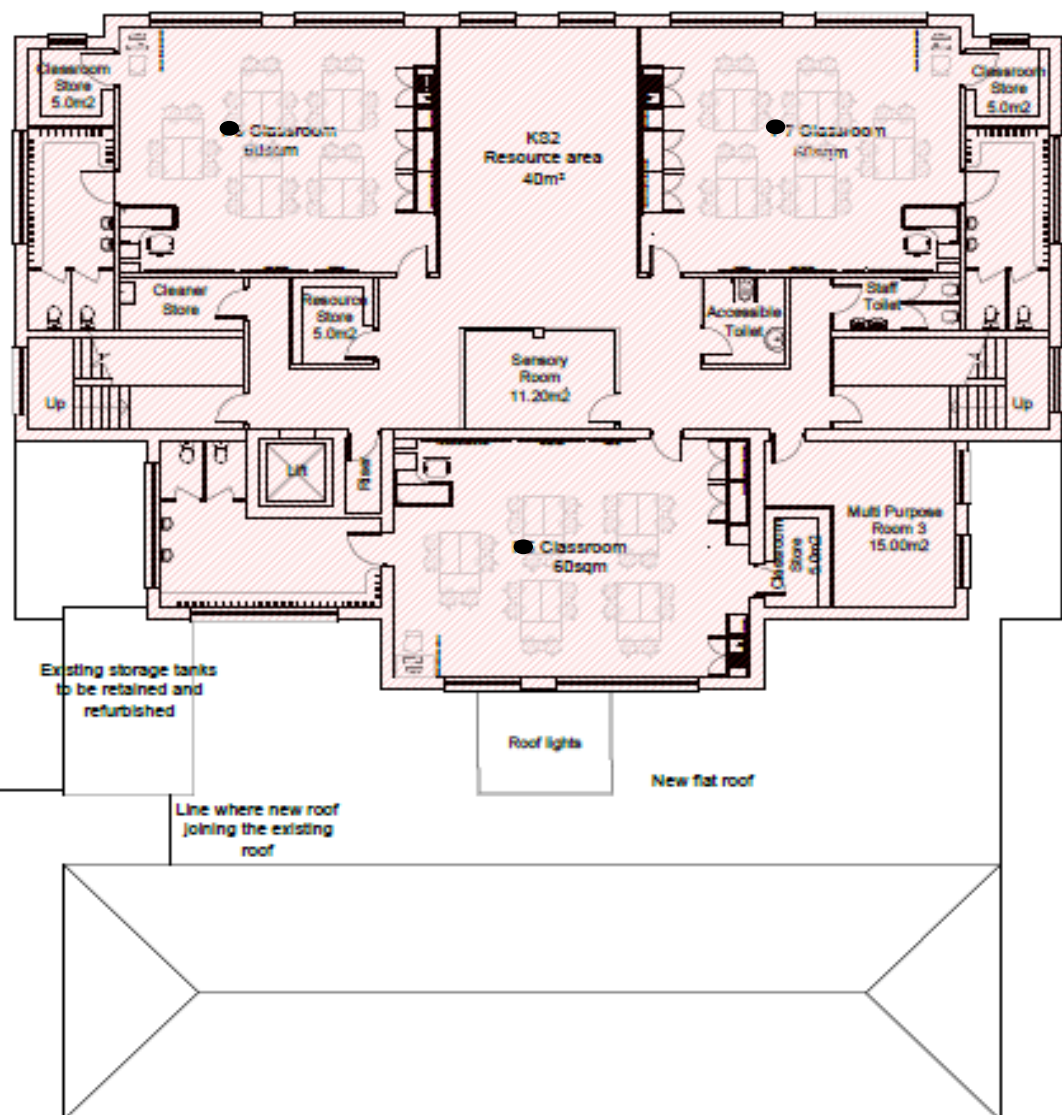
Parentkind
Member Association



Accommodation

Plans are approved and awaiting release of funds for a multi-million-pound extension and refurbishment, to provide a state-of-the-art learning environment.





PROPOSED FIRST FLOOR PLAN



The school currently consists of:

- Seven classrooms with Interactive / SMART boards.
- Resource area outside each Foundation Stage (P1 and 2) Classroom to extend and enrich the learning opportunities.
- Separate class toilets for each Foundation Stage Class.
- Multi-purpose sports/assembly hall.
- Attractive and well-stocked Library with books for all primary school ages and abilities.
- An ICT Suite and a range of technology in all classes, including assistive SEN resources.
- Staffroom and office accommodation.
- Sensory room, shed and trails.

The outside facilities include designated junior and senior play areas. Both play areas include soft pore safety surfaces and fixed outdoor play equipment.

The Junior playground has a purpose-built Mud Kitchen, sand pit and puppet theatre. The Senior playground has a football pitch, poly tunnel, willow hut, a digging areas, reading area, buddy house and a shed for additional equipment. These resources extend the children's learning and enrich their experiences.



Home – School Communication

It is our policy to have open and positive communication with parents and guardians.

We actively encourage parents to contact school with any queries or concerns. Teachers will happily arrange to discuss concerns at mutually convenient times. All families are asked to download the Seesaw App which can offer parents a real time glimpse into the classroom and a platform through which to share learning and messages between school and home.

In addition, we have more formal opportunities throughout the school year for meetings and other communication between teachers and parents:

Autumn Term

- Curriculum meetings for all year groups in September, to identify key areas of learning for the year ahead and how parents can support with this.
- Individual Parent/Teacher Meetings in November / December

Summer Term

- Formal written reports
- Welcome meetings for new Primary One Pupils and their parents in June.

Pupils with Special Educational Needs

All pupils on the Special Educational Needs Register are provided with a targeted Learning Plan at least termly. Targets are set and reviewed in consultation with parents and pupils.

Parent Workshops

Each year a selection of parent workshops are offered to share ideas for helping children at home. These workshops have been on a range of topics including reading, phonics, Numeracy, ICT and transition into Primary 1.



ST MARY'S EXCELLENT INSPECTION RECORD

St Mary's Primary School was inspected by ETI in September 2016 and awarded '*the highest overall level of effectiveness in an inspection*'. This was quality assured in the most recent sustaining improvement inspection in September 2019. St Mary's was also recently highlighted by ETI in a case study of Nurturing Practice within our school. The document was published within 'Emotional Health and Wellbeing Guide: Effective Practice in Educational Settings' (DE Feb 25), which can be viewed via this QR code.



The principal Mrs Kelly, is an Associate Inspector, who works alongside ETI to inspect other Primary Schools. This privileged position, allows Mrs Kelly the benefit of, identifying innovative and best practice across N. Ireland. This knowledge is shared with staff to ensure that practice in St Mary's, continues to reflect new research, approaches and resources in the ever evolving world of education.

The inspections of our school focused on:

- * the children's achievements and standards in literacy and numeracy how the school is addressing low attainment and under-achievement where applicable.
- * the quality of provision for learning; and
- * the quality of leadership and management.

In addition, the school's arrangement for pastoral care, including child protection, was evaluated *outstanding*. The full inspection report can be viewed and downloaded at:

www.etini.gov.uk/inspection-reports-primary.



The School Day in St Mary's Primary School

Supervised Morning Play ICT / Library Club/ Breakfast	8.45am – 9am	Gates open and supervision is in place from 8.45am. Pupils may also access the ICT Suite or library for supervised independent work. Toast available at no charge.
Class Begins	9.05am	
Morning Break P1-3, 5-6 P4&P7	10.30-10.45am 11.50-11.05am pm	Fruit or healthy snack should be brought from home. Snack is provided to classes at least one day per week at no charge.
Lunch P1 P2-3 P5-6 P4&P7	11.45am-12.25pm 11.50am– 12.30pm 12.15 – 12.55 12.35pm-1.15pm	Choice of school dinners or healthy packed lunches.
School Ends P1-P2 P3 P4-P7	2pm 2pm in Sept / Oct 3pm Nov onwards 3pm	P1-3 pupils should be collected by an adult.
Assembly	Monday Mornings	Prayers and discussion of topical issues (e.g.: road safety, anti-bullying). Pupil of the Week in each class, birthdays and special achievements celebrated.
Class Masses	Most Thursday Mornings	Classes rotate.
After School Classes	Arranged in 6-week slots on Tuesday and Thursday 3-4pm during the year.	A range of free after school activities are offered by teachers to classes from P3-7 including Literacy, Numeracy, ICT, Gaelic, Netball, ICT, Lego, Robotics, Art and cycling proficiency.
After School Club	Monday to Friday P1-P3 2- 4.30pm P4-7 3-4.30pm £4 per hour	Timetable of activities reviewed in consultation with pupils termly, including homework, cookery, art, library, sports and film club.

School Dinners

Hot meals which meet the Nutritional Guidelines, are cooked onsite daily. The cost of each dinner is £3. Some children may be entitled to free meals and a uniform grant. Applications can be made online at <https://www.eani.org.uk/financial-help/free-school-meals-uniform-grants/apply-for-free-school-meals-uniform-grants> Dinners can be ordered and paid for through the School Money App. Children are supervised during dinnertime. The school invests in a supervisor ratio well below the recommended minimum, to ensure safe and happy play for all.

The Primary Curriculum

All pupils have full access to the Northern Ireland Curriculum with an emphasis on the promotion of children's self-esteem, interactive activities and learning experiences which foster confidence, curiosity, and creativity. It encourages children to take responsibility for their own learning.

The Primary Curriculum is set out in Six

Areas of Learning:

- Language and Literacy
- Mathematics and Numeracy
- The Arts
- The World Around Us
- Personal Development and Mutual Understanding
- Physical Education



At the heart of the curriculum lies an explicit emphasis on the development of skills and capabilities for lifelong learning and operating effectively in society. Through opportunities to engage in active learning contexts across all areas of the curriculum children will progressively develop:



Cross Curricular Skills:

- Communication
- Using Mathematics
- Using Information and Communications Technology (E-Learning Policy *available in the School Policies section on our website*)

Thinking Skills and Personal Capabilities:

- Thinking, Problem Solving and Decision Making
- Self-Management
- Working with Others
- Managing Information
- Being Creative



Our Approaches to Learning and Teaching in the Primary Curriculum



- Children learn best when learning is interactive, practical and enjoyable.
- Teachers will make use of a wide range of teaching methods, balancing whole class, group and individual activities, to engage children in effective learning.
- Children will experience much of their learning through well-planned and challenging activities.
- Children will have opportunities to make choices and decisions about their learning.
- Children are given equality of opportunity to learn in a variety of ways and in different social groupings.

Teachers plan clear learning intentions which are shared with the pupils. Work is carefully reviewed and evaluated. Assessment procedures, formal and informal, are used to evaluate the teaching and learning process.

Religious Education Programme

St Mary's is a Catholic school, inclusive of all. The Religious Education programme is delivered through '*Grow in Love*'. The programme contains stories, poems, art, drama and music activities all designed to help your child to learn about God. The programme covers the preparation for the sacraments of First Penance, First Holy Communion (P4) and Confirmation (P7). Parents are welcome to view a copy of the religious education programme and meet the class teacher to share any queries or concerns.

In the best interests of all and with the agreement of parents and pupils, those children not of the Catholic faith, may complete work of another nature or opt to participate in some elements of lessons during Religious Education (normally remaining within the classroom due to supervision requirements). Teachers will be sensitive to the needs of the children, including when sending home worksheets/homework.

In preparation for Sacraments, all children are invited to participate in the services. We respect the request of parents for their child not to participate in church sacraments. Teachers are happy to meet with parents upon request to discuss the sacramental preparation programme with them.

While there is no obligation to do so, if children of other religions or none are happy to go to the church, they will sit with their class. Once again, they do not need to take part in the prayers or singing but can if they wish. All children take part in assemblies where pastoral messages are shared throughout the year. Children of other beliefs are not obliged to join in the prayers or hymns but when present will be expected to sit respectfully and join in if they wish.



Special Educational Needs

The school implements the Code of Practice for the Identification and Assessment of Special Educational Needs and the Special Educational Needs and Disability Order.

We seek to identify, as early as possible, those children with Special Educational Needs and to provide for those needs. The responsibility for each pupil's educational needs begins with the class teacher. The Special Educational Needs Coordinator liaises with the class teacher to agree the appropriate provision.

In St Mary's we have a highly skilled staff, and many strategies are used to address and support Special Educational Needs. We focus on early intervention, offering targeted support for those children identified as experiencing literacy, numeracy, or social and emotional difficulties. Qualitative and quantitative evidence is gathered by teachers and the Senior Leadership Team throughout the year and individual needs are prioritized in line with resources available. Parents are kept fully informed of developments throughout the year and their support is essential.

We are supported too by many external agencies throughout the year depending on the needs of the individual child.

If appropriate, a referral will be made to the Educational Psychologist and to other external agencies.





Pastoral Care Policy

In St Mary's we are primarily concerned with the safety, health, well-being, and personal development of all our pupils. We recognize the uniqueness of each child and through our pastoral care, we want to ensure that each child feels cherished and thrives to achieve their full potential in a safe and happy environment.

Aims of the Pastoral Care Policy

- To create a safe, caring community within our school where there is respect for oneself and respect for the views, opinions, and differences of others.
- To develop all aspects of a child's well-being i.e., spiritual, moral, emotional, physical, and academic.
- To provide an environment that will enable each child to develop their self-confidence, their self-esteem, and a positive self-image.
- To work in partnership with parents to overcome any difficulty a pupil may encounter.
- To help pupils appreciate and value the opportunities and resources they have and work as a school to help others in our community and the wider environment.



The pastoral care of our pupils will be developed and enhanced through a wide range of activities and opportunities. These, combined with the Northern Ireland Curriculum, enhance the development of the 'Whole' child.

These include:

- Nurturing approaches in School (Staff WSNAL Level 3 Trained).
- NSPCC Speak Out Stay Safe Programme
- Sustrans Active School Travel Programme
- Assemblies
- Beyond Breaks
- Roots of Empathy
- Whole school liturgical events and class masses
- The involvement of all pupils in presentations and school productions
- The recognition of achievements in and out of school
- The celebration of children's work
- Class duties/responsibilities including buddy and prefect systems.
- The involvement of pupils in charities and supporting our community
- Extra-curricular activities
- Our extended sport and instrumental programme
- Parent/Teacher meetings and year group curriculum meetings



- Educational visits / Shared Education
- The full involvement of pupils in their classroom Rules, Rewards and Consequences



- Circle time
- Grandparents' Day
- Catholic Schools Week
- Additional learning support
- The on-going review of all pastoral care policies and procedures
- Events throughout the year which continue to reinforce important pastoral information
e.g., Anti- Bullying Week, Internet Safety and Child Protection Week, Transition Programmes for all classes (with an additional focus on P1 and 7)

These areas are also reviewed with pupils on many occasions throughout the school year.



Liaison with Parents and Other Agencies

In St Mary's we value the close collaboration with parents in all aspects of school life. The school is a Member of the Parentkind Association. The Friends of St Mary's Group welcomes support from parents, wider family, and friends. We encourage parents to bring any areas of concern firstly to the class teacher's attention as soon as possible. Should problems or misunderstandings arise, we will listen and work with parents.

We would ask parents to support our pastoral care policies and procedures which have been developed after much consultation and on-going review with all members of our school community

The school will utilize the support and expertise of other agencies. These include:

Board of Governors	The Fermanagh Family Hub
Our Parish Priests	NSPCC
Education Authority and CCMS	Charitable Associations
Educational Psychologists	Childline
Our School Nurse and Western Trust Agencies	National Children's Bureau

Key Pastoral Care Personnel

Mrs. P Kelly, School Principal and Deputy Designated Teacher for Child Protection

Mrs. G Fitzpatrick, Vice Principal, Learning Support Co-ordinator and Social Guardian Trained

Mrs. J Corless, Designated Teacher for Child Protection and Pastoral Care Co-ordinator

Mrs. R Grew, ICT Co-ordinator, responsible for Internet Safety & the Safe Use of Digital Technologies

St. Mary's Primary School Pastoral Care Policies including:

- Child Protection and Safeguarding Policy
- Addressing–Bullying Policy
- Positive Behaviour Policy
- Parental Complaints Procedure

are available on the school website www.stmarysps.com Hard copies of these documents are available in the school foyer or upon request.

***Any urgent or sensitive matters may be brought directly to the school Principal/Vice-Principal.**

If you are worried or concerned about your child
Make an appointment to see your child's class teacher
by telephone (02867738690), Seesaw messaging or the
school email, info@stmarysntb.newtownbutler.ni.sch.uk

All staff, teaching and non-teaching, are committed to the well-being of every child

Positive Behaviour Policy

A full copy of our Positive Behaviour Policy, including strategies for dealing with unacceptable behaviour is available to view on our website, www.stmarysps.com

Policy Statement

The Governors, Staff of St Mary's Primary School believe the school to be a vital part of the community. We want our school to be a secure, safe and caring environment where each child is encouraged to grow and develop to their full potential. Positive behaviour practices are essential for effective learning. Such practices help children develop responsible attitudes and values for life. It is the aim in St Mary's to develop fully the potential of all our pupils in a caring atmosphere. Good relationships permeate the school, where children parents and staff feel valued. In St Mary's we believe that positive behaviour will be evident when children show respect for themselves and others.

Aims of the Policy

1. Effective learning will take place in a safe environment.
2. Self-discipline, self-respect, and good personal relationships will be developed
3. People will grow in a spirit of consideration for the whole community.

We do not view behaviour management in terms of sanctions. These can have a part to play in managing children's behaviour. Positive behaviour management strategies are used extensively to promote, improve, and moderate behaviour through encouragement and praise.

OUTCOMES OF AIMS

1. Pupils will respond positively in class working successfully through a planned curriculum.
2. Pupils will take pride in their work and surroundings.
3. Pupils will show mutual respect for others.
4. Staff will act as appropriate role models.
5. To use positive classroom management by delivering well prepared differentiated lessons.
6. To use a fair and consistent approach in all aspects of classroom practice.
7. To reward and give positive feedback to enhance self-esteem.
8. To encourage independence of thought and action and develop an appreciation of responsibility.
9. To apply appropriate sanctions in accordance with agreed school policy.



Promotion of Positive Measures

We believe that the use of encouragement and praise is vitally important in shaping children's behaviour. Our aim is to acknowledge good behaviour of all children.

Effective rewards should:

- Promote self-esteem and confidence.
- Encourage pupils to take responsibility for themselves and for others as well as property.
- Motivate pupils to achieve.
- Be appropriate to meet individual needs.

Reward Systems to Promote Positive Behaviour

We feel that using a positive system of rewards will increase children's self-esteem and thus help them to achieve more. Encouragement can be given in many ways. Reward systems are developed in consultation with pupils and can be on whole school, Key Stage, Class, or individual basis.



This is done through:

- A preventative curriculum which develops respect and empathy for others. This is specifically addressed during Religion, PDMU and Circle time lessons, however it is also integral within the whole curriculum and ethos of our Catholic School.
 - Promoting the Golden Rules and Golden Time
 - Praise by teacher
 - Non-verbal rewards including e.g., smiling, nodding or thumbs up.
 - A public praise of work in front of the class, other classes, or the whole school e.g., Pupil of the week
 - A visit to another member of staff, Vice Principal or Principal
 - Use of school report to comment favourably on good behaviour and general attitudes to school life
 - Pupils allocated roles of responsibility. (book monitors, playground buddy, reading buddy)
 - A written comment on a child's work.
 - Display of work
 - Display of achievements/celebration of talents
 - School prefects (modelling and praising good behaviour)
 - Incidental prizes issued
 - Individual/ whole class reward systems.
 - Newsletters celebrating achievements of pupils.
 - Use of stickers, stars, smiley faces or small material rewards.
 - Website
 - Positive Home-School Diaries / correspondence
- This is not an exhaustive list.

*WE INSPIRE CHILDREN TO
HAVE A HIGH STANDARD OF BEHAVIOUR RATHER
THAN SUBJECT THEM TO IT.*





Assessment and Reporting Procedures

Assessment of children's work is an integral part of our school curriculum and is used to:

- Establish each child's level of achievement
- Assist the teacher to plan and meet the needs of each child



Assessment at the Foundation Stage

Assessment in Primary 1 and Primary 2 is mainly observation based. Adult observations are carried out with the children in an unobtrusive way and inform future planning.

Children are made aware of their progress by receiving positive feedback. They work together with their teacher to improve. Teachers assess pupils' cross-curricular skills, thinking skills and personal capabilities, levels of concentration and involvement and emotional development.

Assessment at Key Stage 1 & 2

Assessment in St Mary's happens daily. Teachers plan meticulously to meet the needs of all children and evaluate their learning each week, setting new targets for further development. Children are assessed informally throughout the week and at the end of the week. More formal standardized assessments take place during the year using standardized Maths, English, Reading and Spelling Tests and Cognitive Abilities Test (CAT). Test results are digitally analyzed at individual, class and whole school level.



Testing & Analysis of Data

Testing and Analysis of Data

Annual standardized testing is completed in May each year

Children complete attainment tests in English, Maths, Reading & Spelling

Children in P4 & P6 complete a Cognitive Ability Test (CAT 4)

Children from P4-P6 complete a survey on Pupil Attitude to Self and School (PASS)

Whole school analysis of data is carried out annually.

Parents receive copies of all test scores and CAT profiles along with End of Year Report in June.

Overall English and Maths scores for pupils in St Mary's Primary School have been consistently above the Northern Ireland Average for more than 15 years.

St Mary's Average English Standardized Score June 2025	Northern Ireland GL Average English Standardized Score is 100	St Mary's Average Maths Standardized Score June 2025	Northern Ireland GL Average Maths Standardized Score is 100
104	St Mary's average English Score is 5 marks above the GL NI Average	105	St Mary's average Maths Score is 9 marks above the GL NI Average

Transfer to Post Primary

During the past 10 years over 99.5% of pupils have secured a place in their first preference post-primary school.

Analysis of transfer test results for Fermanagh Grammar Schools, indicates that pupil performance in St Mary's Primary School is above the local average.



Out of School Hours Learning

The ICT suite and library are also supervised daily from 8.45-9.05am for those who wish to avail of it to, change books, read, complete computer-based homework or to continue with one of our many computer-based subscriptions such as: Lexia, Accelerated Reader, Bug Club or Mathletics.

Wrap Around Child Care up to 4.30pm

St. Mary's is delighted to provide an after-school club on site from 2-5pm daily. There is a small charge of £4 per hour or £2 per ½ hour. Discount is available for siblings. The club offers a variety of activities including fitness, cookery, homework, library, and film club. The activities are reviewed in consultation with pupils on a termly basis and a timetable is issued to parents.

After School Provision

St. Mary's also runs an extensive Extended School's Programme using the skills and talents of staff and outside specialists. We provide a wide balance of activities both academic and creative. These after school clubs include English, Maths, Irish, ICT, Lego, Art, Gaelic, Netball and Cycling.



Homework Policy

St. Mary's Primary School sees a value in children engaging in homework as a means of revising and consolidating work done in school, in researching information, in preparing for tests and examinations, in involving parents in their children's studies and in the development of good work habits.

This must be balanced with each child's need for recreation and the development of personal interests and hobbies.

The set amount of homework will take account of that. **If parents have any concerns about homework they are most welcome to discuss the matter with the class teacher** - by appointment.

It is school policy that suitable homework will be given on a very regular basis. Weekend homework is at the discretion of the class teacher.

Parents' assistance can ensure that:

- (a) children do their homework in a warm, quiet area with no distractions
- (b) children are properly supervised (We recommend that parents discuss / check or complete as necessary, any homework which has been started in After School Club).
- (c) homework is completed with great care
- (d) children learn their reading, spellings and tables



Suggested time limits for homework:

- P1 – P2 15-30 minutes
- P3 – P4 30-45 minutes
- P5 – P7 45-60 minutes

If a child cannot complete homework in the allocated time, please note this on their homework book or send a message on Seesaw. Remember to keep good contact with the class teacher if you have any concerns about homework.

Please find listed below the homework schedule for each year group Monday-Thursday.

Primary 1	Maths, English or other curriculum activity Reading, introduced gradually, preceded by words to practise and picture books to develop language and book handling skills.
Primary 2	Reading and Phonics (given Mon. parts to be completed each night and returned on Friday) Twice weekly Maths activities introduced through October.
Primary 3&4	Reading, Phonics, Mental Maths Book and English Practise Books (nightly Mon-Thurs introduced during P3) Practise number facts nightly.
Primary 5-7	Reading, Phonics, Mental Maths and English Practice Books (nightly Mon-Thurs). Maths or English Activity (this may include a reading activity) Practise tables nightly

On occasion pupils will be asked to learn prayers, hymns or poems, to discuss RE or topic work and older pupils may be asked to carry out research and computer based activities at home. Primary 1,2 and 3 pupils will bring Grow In Love Workbooks home to share with parents.

P3-7 Athletics on Thurs

Lexia / Accelerated Reading, Active Learn (Abacus) as directed by teacher.

Sport at St Mary's

Every child in St. Mary's Primary School is provided with a wide range of indoor and outdoor sporting activities both during the physical education programme and as part of our after - school extra-curricular activity programme. The sporting activities include Gaelic, Hurling, swimming, dance, athletics and netball. As well as school staff, sports specialists provide a range of activities. The children are given many opportunities to participate in tournaments and leagues throughout the school year.



Music at St Mary's

All pupils have access to musical provision as part of the Northern Ireland Curriculum. The school choir performs at school Masses, sacraments, carol singing at different venues and in school performances. Violin and Piano tuition are also offered as an additional option for older pupils. Lots of opportunities are provided for children to display their many talents.



Links with Other Agencies

We see the school as a vital part of local community and take every opportunity to contribute to the life of that community. In order to do this, we liaise closely with our local priests and church organizations. We also have particularly strong links with First Fermanagh's GFC and the Newtownbutler Credit Union.



Each year transition activities are planned with Newtownbutler Play Group, including visits by Playground Buddies, on World Book Day and 'Stay and Play' sessions in the Summer Term.

We also have close links with our local post primary schools in an effort to ease each child's transition to second level education. P7s visit several post primary schools on 'Activity' and 'Taster' days. They are also visited by representatives from these schools during the school year.

We co-operate with and receive support from the local Health Authority Personnel. When necessary, we seek the help and advice of other statutory agencies. The school health team and educational psychologist support the school in catering for the needs of our pupils.

We host many students from St Mary's University College, Stranmillis University College, Queen's University Belfast, University of Ulster, South West College and Students from local schools.

Our pupils also reach out to those less fortunate in the local community, throughout the year. Our cross-community links are strong and the school is part of a well-established Shared Education Partnership along with Newtownbutler PS and St Joseph's PS Donagh.

St Mary's supports many charities including Trocaire, St Vincent de Paul, the shoe box appeal, the Cedar Foundation, NSPCC, NI Cancer Fund for Children and Action Cancer.



Admissions Criteria

St Mary's Primary School
School

1 Landbrock Road

Drumquilla

Newtownbutler

BT92 8JJ

26

Tel No: 028 6773 8690

Website: www.stmarys.com

Maintained Primary

Enrolment No: 182

Admissions No

PRINCIPAL: Mrs. P Kelly

E-mail: info@stmarysntb.newtownbutler.ni.sch.uk

CHAIR OF BOARD OF GOVERNORS: Mr E Casey

RESPECTIVE FUNCTIONS OF THE BOARD OF GOVERNORS AND PRINCIPAL IN RELATION TO ADMISSIONS.

The Board of Governors have delegated to an Admissions Sub-Committee the task of selecting pupils for admission. The Sub-Committee consists of the Principal and three other Governors.

ADMISSIONS CRITERIA

During the admissions procedure when applying the criteria punctual applications will be considered before late applications are considered. The application procedure opens on 7 January 2026 at 12noon (GMT) and an application submitted by the closing date of 21 January 2026 at 12noon (GMT) will be treated as a punctual application. An application received after 12noon (GMT) on 21 January 2026 and up to 4 pm on 26 January 2026 will be treated as a late application, this is also the last date and time for processing a change of preference in exceptional circumstances. After 4 pm on 26 January 2026 no applications will be processed until after the close of procedure on 23 March 2026.

COMPULSORY SCHOOL AGE

Any child who reaches their 4th Birthday on or before 1st July 2026 is of Compulsory School Age. Under the School Age (NI) Act which became law in Northern Ireland in April 2022, 'compulsory school age' also includes those children who deferred commencing Primary 1 in September 2025 as defined by the new School Age (NI) Act (both groups to be treated equally).

Priority will be given to children resident in Northern Ireland at the time of their proposed admission to the school before those who are not so resident.

The Board of Governors for St Mary's Primary School, Newtownbutler, has determined that the following criteria will be applied, in the order set down, in the event of the number of pupils applying for admission to Year 1 in September being greater than the admissions number.

Priority will be given, in the application of each criterion, to pupils regarded by the Board of Governors, on the basis of supporting evidence from parents and/or Statutory Agencies, as having special circumstances, (ie medical, social, security).

- 1 Children of compulsory school age who normally reside in the Parish of Galloon. (The Parish map is available from the school office)
- 2 Children who have siblings currently enrolled in the school or are the eldest child (defined as a child who at the date of application, is the eldest child of the family to be eligible to apply for admission to the school). Twins who are the 1st child/ren will be considered as joint eldest.
- 3 Children whose siblings and/or parents have previously attended the school.
- 4 Children whose parent/guardian is presently a permanent member of the

'Highest level of overall effectiveness in an inspection' ETI Sept '19

teaching/ancillary/auxiliary staff.

- 5 Children who have selected St Mary's as their first preference school.
- 6 Other children of compulsory school age.

If the school is over-subscribed after the application of the above criteria, selection will be on the basis of initial letters of surname (as entered on the birth certificate) in the order set out below:

Z E C J T P M c F Y R B G L V O S I W M a c Q U K N D H X A M

This order was determined by random selection.

In the event of surnames beginning with the same initial letter, the subsequent letters of the surname will be used in alphabetical order. In the event of two identical surnames, the alphabetical order of the initials of the forename (as entered on the birth certificate) will be used.

YEAR 1 ADMISSIONS – AFTER THE BEGINNING OF THE SCHOOL YEAR

Children who apply to enter the school during the academic year will be considered using the same criteria as for Year 1.

DUTY TO VERIFY

The Board of Governors reserves the right to require such supplementary evidence as it may determine to support or verify information on any application.

If the requested evidence is not provided to the Board of Governors by the deadline given, this will result in the withdrawal of an offer of a place. Similarly, if information is supplied which appears to be false or misleading in any material way, the offer of a place will be withdrawn.

WAITING LIST POLICY

Should a vacancy arise after placement letters have been issued, all applications for admission to Primary 1 that were initially refused, new applications, late applications and applications where new information has been provided will be treated equally and the published criteria applied. This waiting list will be in place until the end of the academic year.

The school will contact parents in writing if a child gains a place in the school by this method. A child's name will be automatically added to the list. Parents should contact the school if they wish for their child to be removed from the list.

ADMISSIONS CRITERIA – YEARS 2-7

The following criteria will be applied, in the order set down below, to all pupils seeking admission to Years 2 to 7. However, the school shall not cause or admit the number of registered pupils to exceed the school's enrolment number as determined by the Department of Education.

- 1 Pupils for whom their admission would not, in the opinion of the Board of Governors, prejudice the efficient use of the school's resources.

If there are more applicants applying than places available, then the Criteria for Year 1 will be applied.

APPLICATIONS & ADMISSIONS TO PRIMARY 1

Year	Total Applications	Total Admissions
2023/2024	27	26
2024/2025	30	29
*2025/2026	24	24

St. Mary's Charging and Remissions Policy

In line with the requirements of the Northern Ireland Education Reform Order 1989, it is the policy of the Board of Governors to: -

- maintain the right to free school education for all pupils.
- establish that activities organized wholly or mainly during the school day should be available to all pupils.
- request voluntary contributions for the benefit of the school or in support of activities organized by the school; make charges in respect of optional extras, e.g. After School Activities, School outings, etc. as determined by the Board of Governors.



